

# A Common Set of DNA Regulatory Elements Shapes *Drosophila* Appendages

Daniel J. McKay<sup>1,\*</sup> and Jason D. Lieb<sup>1,2,\*</sup>

<sup>1</sup>Department of Biology, Carolina Center for Genome Sciences, and Lineberger Comprehensive Cancer Center, The University of North Carolina at Chapel Hill, Chapel Hill, NC 27599-3280, USA

<sup>2</sup>Present address: Department of Molecular Biology and Lewis-Sigler Institute for Integrative Genomics, Princeton University, 144 Carl Icahn Laboratory, Princeton, NJ 08544, USA

\*Correspondence: [dmckay1@email.unc.edu](mailto:dmckay1@email.unc.edu) (D.J.M.), [jdlieb@princeton.edu](mailto:jdlieb@princeton.edu) (J.D.L.)

<http://dx.doi.org/10.1016/j.devcel.2013.10.009>

## SUMMARY

Animals have body parts made of similar cell types located at different axial positions, such as limbs. The identity and distinct morphology of each structure is often specified by the activity of different “master regulator” transcription factors. Although similarities in gene expression have been observed between body parts made of similar cell types, how regulatory information in the genome is differentially utilized to create morphologically diverse structures in development is not known. Here, we use genome-wide open chromatin profiling to show that among the *Drosophila* appendages, the same DNA regulatory modules are accessible throughout the genome at a given stage of development, except at the loci encoding the master regulators themselves. In addition, open chromatin profiles change over developmental time, and these changes are coordinated between different appendages. We propose that master regulators create morphologically distinct structures by differentially influencing the function of the same set of DNA regulatory modules.

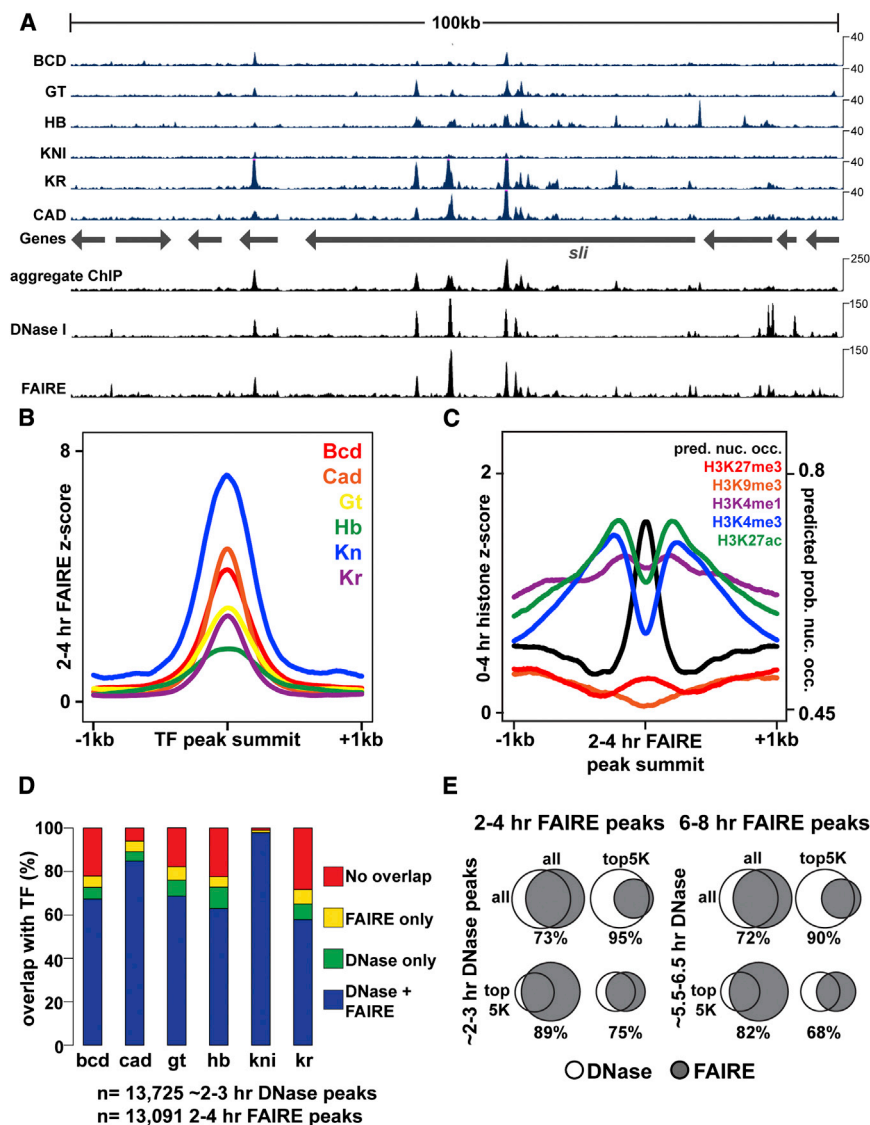
## INTRODUCTION

Animals are comprised of a diversity of body parts, varied in form according to their function. Among species, changes in DNA sequence have been shown to underlie changes in morphology (Carroll, 2008; Wray, 2007). However, within a single animal, the same genome sequence gives rise to the full panoply of body parts through differential regulation of gene expression. During development, differences in body part identity are determined by the activity of master regulator transcription factors, often termed “selector” genes (Mann and Carroll, 2002). In *Drosophila*, the homeodomain transcription factor Distalless (Dll) (Gorfinkiel et al., 1997) and the zinc-finger proteins Buttonhead and Sp1 (Estella and Mann, 2010) specify ventral appendage identities, including the legs. Dorsal appendage identities, such as the wing and haltere, are specified by Vestigial (Vg) and its TEA-domain DNA binding partner Scalloped (Sd) (Halder et al., 1998). Along the anterior-posterior axis, morphology of struc-

tures is diversified by other master regulator transcription factors, such as the Hox proteins. For example, the Hox protein Ultrabithorax (Ubx) is responsible for specifying haltere identity over wing (Lewis, 1978). Although many of the transcription factors that control growth and patterning during appendage development have been identified, little is known about how they access regulatory information in the genome to create different appendage morphologies. One possibility is that each master regulator, with its unique DNA binding specificity, accesses a unique set of *cis*-regulatory elements in the genome to differentially regulate gene expression between the appendages.

A major hurdle to understanding the mechanisms of developmental gene regulation is the identification of functional DNA regulatory elements in the genome. A variety of methods has been used to identify potential DNA regulatory elements with varying degrees of success, including prediction of transcription factor binding sites (Berman et al., 2002; Markstein et al., 2002; Rebeiz et al., 2002), DamID (van Steensel and Henikoff, 2000), chromatin immunoprecipitation (ChIP) (Fisher et al., 2012; Nègre et al., 2011; Sandmann et al., 2007; Visel et al., 2013; Zinzen et al., 2009), STARR-seq (Arnold et al., 2013), and large-scale cloning efforts (Jory et al., 2012; Pfeiffer et al., 2008). Yet another approach to identify DNA regulatory elements is the identification of nucleosome-depleted or “open chromatin” sites. Methods such as DNase I hypersensitivity mapping (Dorschner et al., 2004) and FAIRE (Giresi et al., 2007; Nagy et al., 2003) provide a snapshot of genomic sites at which nucleosomes have been depleted, often through competition with *trans*-acting factors. Nucleosome depletion identifies a variety of DNA regulatory elements, including those involved in DNA replication (MacAlpine et al., 2010), nuclear organization (Bartkuhn et al., 2009), and transcription (e.g., enhancers) (Song et al., 2011; Thomas et al., 2011). Thus, open chromatin profiling is well suited to compare how *trans*-acting factors read out the genome between different tissues, independently of the identity of those factors.

Here, we use development of the thoracic appendages in *Drosophila* to examine how a single genome sequence is utilized to give rise to morphologically diverse structures. We first demonstrate that open chromatin is an accurate and precise predictor of functional enhancer activity in developing embryos. Next, we ask how the genome is accessed in different appendages at two stages of their development. Although comprised of similar cell types, each appendage expresses a different combination of master regulator transcription factors that have different DNA binding domains, and therefore we hypothesized



**Figure 1. FAIRE Identifies Open Chromatin Bound by Key Developmental Regulators**

(A–E) All times below refer to hours after egg laying (AEL) and have been estimated for data from other studies. DNase I data are from [Thomas et al. \(2011\)](#). ChIP data are from [Bradley et al. \(2010\)](#). Transcription factors (TFs) include Bcd, Bicoid; Cad, Caudal; Gt, Giant; Hb, Hunchback; Kn, Knirps; Kr, Kruppel.

(A) Browser representation of the *slit* locus. Above the genes track is ChIP signal (blue, counts per million reads [CPM]) from 2–3 hr embryos, plotted for individual TFs. Below the genes track, from top to bottom, is the aggregate ChIP signal generated by summing the normalized signal from each individual TF, followed by 2–3 hr DNase I signal (CPM) and 2–4 hr FAIRE data (CPM).

(B) Plots of 2–4 hr FAIRE signal at TF peaks from 2–3 hr embryos.

(C) Plots of 0–4 hr histone modification signals ([Nègre et al., 2011](#)) and predicted probability of nucleosome occupancy based on DNA sequence ([Kaplan et al., 2009](#)) for regions surrounding 2–4 hr FAIRE peaks, centered on the maximum FAIRE signal for each peak.

(D) Stacked bar charts showing overlap of ~2–3 hr DNase I and 2–4 hr FAIRE peaks with TF ChIP peaks from 2–3 hr embryos.

(E) Venn diagrams depicting peak overlaps between ~2–3 hr DNase I peaks and 2–4 hr FAIRE peaks (left), and ~5.5–6.5 hr DNase I and 6–8 hr FAIRE peaks (right).

See also [Figure S1](#).

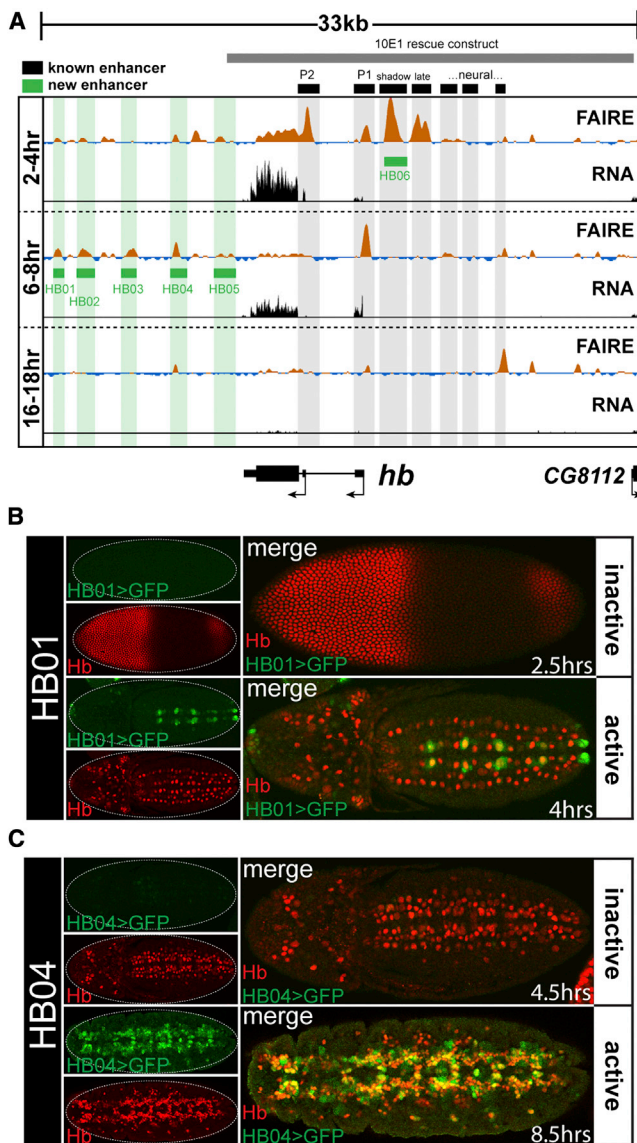
that in each appendage a significant subset of the enhancers used would be unique to that appendage. In contrast to our expectations, we find that the same set of enhancers is accessible in all three appendages, with the exception of enhancers that control expression of the master regulators themselves. We show that this shared set of appendage enhancers changes coordinately over developmental time. Finally, we provide functional evidence that the appendage master regulators differentially regulate the activity of the same enhancers to effect differences in gene expression between the appendages. Thus, morphologically distinct structures can be created using essentially the same set of enhancers.

## RESULTS

### FAIRE Identifies DNA Bound by Regulatory Factors in Developing Animals

To identify genomic locations with gene regulatory activity, we performed formaldehyde-assisted isolation of regulatory

elements, which identifies nucleosome-depleted or “open” chromatin, followed by high-throughput sequencing (FAIRE-seq) ([Giresi et al., 2007](#); [Simon et al., 2012](#)) and RNA sequencing (RNA-seq) at three developmental time points in *Drosophila* embryos: 2–4 hr after egg laying (AEL) during initial establishment of the body axes and germ layers, 6–8 hr AEL during fine-scale cell fate specification through the action of local signaling pathways, and 16–18 hr AEL when many cells have terminally differentiated. Consistent with previous studies ([Giresi et al., 2007](#); [Song et al., 2011](#)), we find FAIRE-enriched regions are bound by regulatory factors ([Figure 1](#); [Figure S1](#) available online). FAIRE signal very closely resembles the aggregate transcription factor chromatin immunoprecipitation (ChIP) signal ([Bradley et al., 2010](#)) ([Figure 1A](#)), supporting the well-established association between transcription factor binding and nucleosome depletion ([Figure 1B](#)). Genomic locations with high FAIRE signal are evolutionarily conserved ([Siepel et al., 2005](#)) ([Figure S1](#)) and are associated with high levels of “active” histone modifications ([Figures 1C](#) and [S1](#)), including H3K4me1 and H3K27ac, marks associated with enhancer activity, and H3K4me3, a mark associated with active gene promoters. Correspondingly, high FAIRE signal is associated with low levels of “repressive” histone modifications, such as H3K27me3 and H3K9me3 ([Figures 1C](#) and [S1](#)). FAIRE data from embryos collected at 2–4 hr and



**Figure 2. FAIRE Signal Accurately Predicts Enhancer Activity**

(A) FAIRE (Z score: -2 to 10) and RNA (FPKM: 0-100) signals at the *hunchback* (*hb*) locus in embryos. Black boxes designate the locations of known enhancers: (left to right) P2 promoter, P1 promoter, blastoderm shadow enhancer, late blastoderm enhancer, and recently identified neural enhancers (Gallo et al., 2011; Hirono et al., 2012; Margolis et al., 1995; Perry et al., 2011). Green boxes designate enhancers that were identified and cloned in this study. The gray box indicates the boundaries of the 10E1 transgenic *hb* rescue construct, which rescues early embryo defects but not later *hb* function (Margolis et al., 1995).

(B and C) Confocal images of embryos from two transgenic lines (HB01, HB04) stained with antibodies for Hb (red) and GFP (green) protein. The estimated age of each embryo is indicated. The timing of chromatin opening coincides with timing of reporter activity.

See also Table S1 and Document S2.

6-8 hr also closely match recent genome-wide DNase I hypersensitivity data from early *Drosophila* embryos (Thomas et al., 2011) (Figures 1A, 1D, and 1E). Thus, FAIRE identifies nucleosome-depleted regions during *Drosophila* development, which coincide with genomic sites bound by multiple regulatory fac-

tors. Both FAIRE-seq and RNA-seq experiments were highly reproducible (Figure S1).

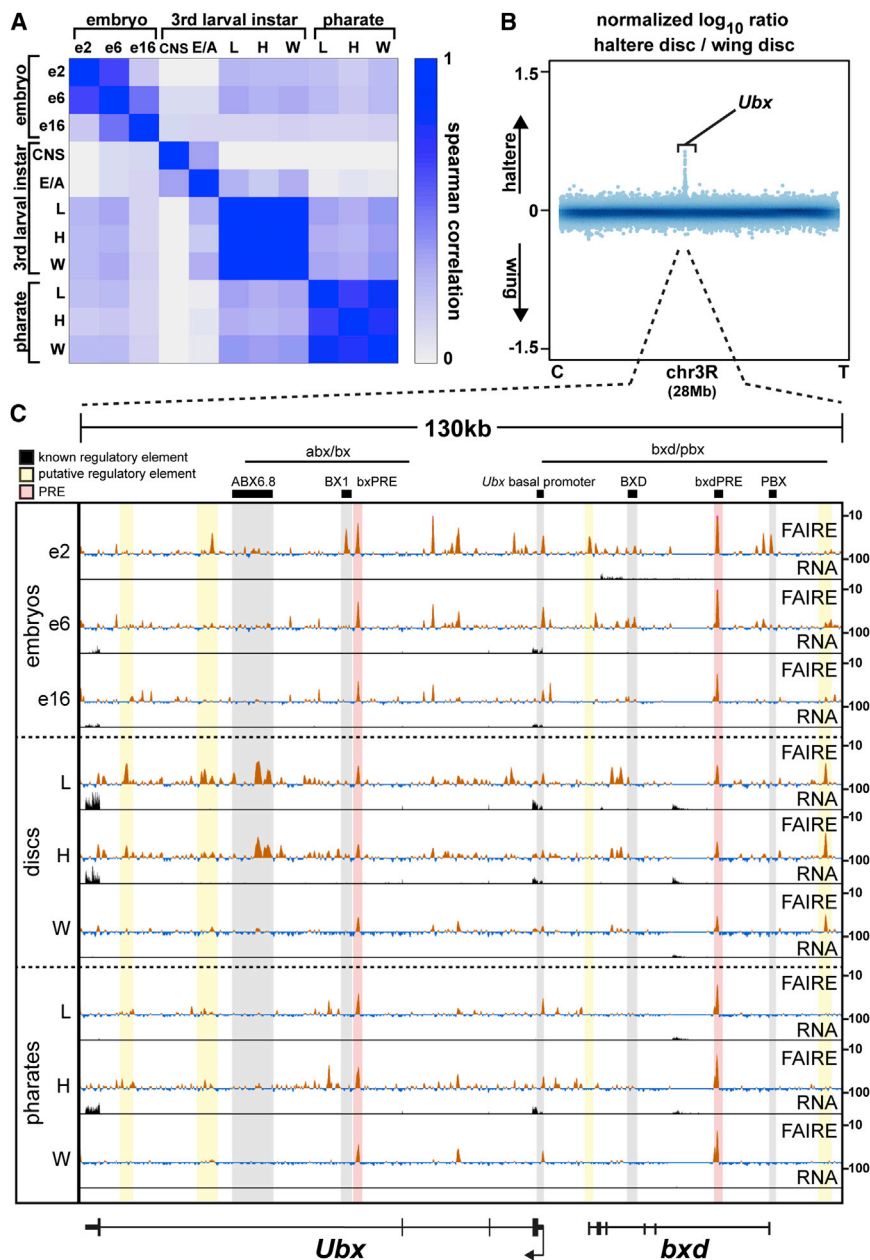
### Open Chromatin Identifies Enhancers and the Timing of Enhancer Activity

A range of approaches has been used to identify functional DNA regulatory elements in the genome with varying degrees of success (Aerts et al., 2007). Because FAIRE identifies genomic regions that are bound by *trans*-acting proteins, it followed that FAIRE enrichment might be used as a predictor of enhancer activity at a given point in time. To test the sufficiency of individual FAIRE-enriched sites to control transcription, we cloned 24 different open chromatin regions for transgenic reporter assays (Table S1). To identify target regions for cloning, we used only FAIRE data, without consulting any other data sets (e.g., ChIP, evolutionary conservation). We chose previously uncharacterized regions that were differentially accessible across developmental stages or between tissues and that are near developmentally important genes known to be expressed at these stages. We placed these selected regions upstream of a synthetic core promoter (Pfeiffer et al., 2010) to drive expression of the yeast transcription factor GAL4.

Despite extensive prior study of the loci selected for testing, we identified many previously undiscovered enhancers. Twenty-three of the 24 (96%) cloned regions recapitulated sharp, distinctive subsets of their gene's expression pattern in transgenic reporter assays (Document S2). For example, several enhancers were identified at the *hunchback* (*hb*) locus. *Hb* was first identified because of its function in anterior-posterior patterning of the blastoderm embryo (Nüsslein-Volhard and Wieschaus, 1980). Consistent with that role, all *hb* enhancers previously known to control blastoderm expression (Gallo et al., 2011; Perry et al., 2011) coincide precisely with regions of open chromatin specifically at the 2-4 hr FAIRE time point (Figure 2A, black boxes). However, little is known about control of *hb* expression later in development when *hb* is required for proper development of the central nervous system (Hirono et al., 2012) and the tracheal system (Merabet et al., 2005).

We cloned six *hb* enhancers in this study. The HB01 enhancer, which is accessible at the 6-8 hr time point (and to a lesser extent at the 2-4 hr time point), is active in a subset of Hb-positive neuroblasts in the ventral nerve cord beginning at 4 hr AEL (Figure 2B), whereas the enhancers HB04 and HB05, which are also accessible at 6-8 hr, are active in the Hb-positive progeny of these cells beginning around 5 hr AEL (Figure 2C; Document S2). Enhancers HB02 and HB03 recapitulate *hb* expression patterns in cells required for tracheal system development, in the mesoderm, and in the nervous system (Document S2). Enhancer HB06, which coincides with the recently identified *hb* shadow enhancer, recapitulates *hb* expression patterns in blastoderm embryos. The expression patterns of these enhancers show (1) that regulation of *hb* expression is divided between different enhancers for different lineages of *hb*-expressing cells and (2) that there is a temporal division in the regulation of *hb* expression between different enhancers within *hb*-expressing cells of the developing nervous system. Interestingly, none of the 3' *hb* enhancers we cloned are fully contained within the 10E1 *hb* construct (Figure 2A, gray box), which rescues *hb* function in blastoderm embryos but is unable to provide





**Figure 3. Appendage Open Chromatin Profiles Are Very Similar within a Stage, Except at Master Regulator Loci**

(A) Spearman correlation coefficients of FAIRE signal in 500 bp windows genome-wide for each pairwise comparison across all samples.

(B) Log<sub>10</sub> ratio (haltere/wing) of FAIRE signal from chromosome 3R (28 Mb). Centromere (C), telomere (T), and the *Ultrabithorax* (*Ubx*) locus are indicated.

(C) FAIRE (Z score: -2 to 10) and RNA (FPKM: 0 to 100) signals at the *Ubx* and *bithoraxoid* (*bxd*) loci in embryos, imaginal discs, and pharate appendages. Horizontal black lines indicate the locations of known *Ubx* regulatory regions (Simon et al., 1990). Black boxes designate the locations of known DNA regulatory elements: (left to right) ABX6.8 enhancer, BX1 enhancer, bxdPRE, *Ubx* basal promoter, BXD enhancer, bxdPRE, and PBX enhancer (Chan et al., 1994; Müller and Bienz, 1991; Pirrotta et al., 1995; Qian et al., 1991; Simon et al., 1990; Zhang et al., 1991). Shaded red regions indicate the locations of known PREs (Papp and Müller, 2006; Pirrotta et al., 1995). Shaded yellow regions indicate the locations of putative regulatory elements identified in this study.

See also Figures S2, S3, and S4.

(PREs) (Figure 3). Conversely, regions of the genome that are not enriched by FAIRE could possibly act as transcriptional enhancers or regulate gene expression through other mechanisms. Nevertheless, these reporter experiments demonstrate that FAIRE is an exceptionally accurate, sensitive, and precise predictor of gene regulatory activity.

### Open Chromatin Profiles among Leg, Wing, and Haltere Imaginal Discs Are Nearly Identical at a Given Developmental Stage

Similar to DNase I hypersensitivity patterns in embryos (Thomas et al., 2011), regulatory elements defined by FAIRE

appropriate *hb* function later in development, leading to lethality (Margolis et al., 1995). This, along with our data from expression constructs, suggests that these newly cloned enhancers are essential for regulating *hb* expression later in embryogenesis.

Finally, an important feature emerges from analysis of the newly cloned enhancers: the timing of the appearance of open chromatin at enhancers coincides with the timing of their activity in vivo (Figure 2; Table S1). Thus, FAIRE can identify not only the precise genomic location of functional enhancers but also the time at which these enhancers are active. Because FAIRE identifies any region of the genome that is depleted of nucleosomes, it is not expected that all FAIRE-enriched regions act as transcriptional enhancers. For example, many open chromatin regions identified by FAIRE correspond to Polycomb response elements

were highly dynamic from one embryonic stage to the next, with thousands of sites opening and closing between stages (Figure S6). We next asked how information in the genome is utilized to generate morphologically diverse structures by mapping open chromatin during *Drosophila* appendage development. Insect appendages are thought to have evolutionary origins greater than 400 million years ago (Engel and Grimaldi, 2004; Garrouste et al., 2012), and they exhibit a stunning diversity of morphologies tailored to their functions (Grimaldi and Engel, 2005). The identity of each appendage is specified by a unique combination of master regulator transcription factors that differentially controls pattern formation, growth, and differentiation (Ashburner and Novitski, 1976; Estella and Mann, 2010; Gorfinkel et al., 1997; Halder et al., 1998). Because the appendage master regulators

possess different DNA-binding specificities, our hypothesis was that different transcriptional enhancers would be used to create each morphologically distinct appendage. To test this, we dissected the precursors of the thoracic appendages (called imaginal discs) from third-instar larvae (120 hr) and performed FAIRE. In sharp contrast to our findings from different stages of embryogenesis, and in refutation of our hypothesis, open chromatin profiles from the wing, haltere, and metathoracic (T3) leg imaginal discs were nearly identical to each other (Figure 3A; Figure S6). For example, the Spearman's rank correlation coefficients of FAIRE signals between the thoracic appendage imaginal discs ranged from 0.85 to 0.90, whereas the same measures between different stages of embryogenesis ranged from 0.20 to 0.64. We describe these findings in more detail below.

#### Nearly All the Differences in Open Chromatin between Wing and Haltere Imaginal Discs Occur at the *Ubx* Locus

Comparison of wing and haltere imaginal disc open chromatin profiles revealed an especially striking result. Among the most pronounced FAIRE peaks in wing and haltere discs across the entire genome (the top 20%, 3,525 peaks), only five sites are specifically open in haltere imaginal discs relative to wing imaginal discs (Figure S2; Table S2). Four of these five regions are located within the *Ubx* locus (Figures 3B, 3C, and S3A). The function of *Ubx* in transforming wing identity into haltere is one of the best-characterized examples of transcription-factor dependent morphogenesis in development (Crickmore and Mann, 2008). Mutations in *Ubx* can lead to transformation of haltere into wing, resulting in a four-winged fly (Lewis, 1978). Although *Ubx* has been shown to regulate hundreds of target genes at specific stages of haltere development (Hersh et al., 2007; Pavlopoulos and Akam, 2011) (Figure S4), the molecular mechanisms by which *Ubx* controls growth and patterning are largely unknown. Recent ChIP-chip experiments have identified putative *Ubx* binding sites in the developing haltere and T3 leg imaginal discs (Choo et al., 2011; Slattery et al., 2011a), but the pattern of *Ubx* binding suggests that only a subset of these sites are functional (Slattery et al., 2011a). Moreover, because *Ubx* is expressed in the haltere, but not in the wing, these ChIP experiments cannot be used to compare how regulatory information is accessed in the haltere relative to the wing. We asked whether our FAIRE data could help to define functional *Ubx* binding events. We found that open chromatin sites bound by *Ubx* tend to be more conserved and occur at *Ubx*-responsive genes (Figures S3B–S3D). These data, combined with the data showing that only five sites are open in the haltere disc but not the wing disc, with four of these residing at the *Ubx* locus itself, means that *Ubx* binds to regulatory DNA in the haltere (where *Ubx* is expressed) that is also accessible for use in the wing (where *Ubx* is not expressed), rather than to a set of enhancers that are specific to the haltere. Thus, these data suggest that morphologically distinct structures with a shared evolutionary origin can be made by acquiring transcription factor binding sites in existing enhancers, rather than by introducing a new set of enhancers de novo.

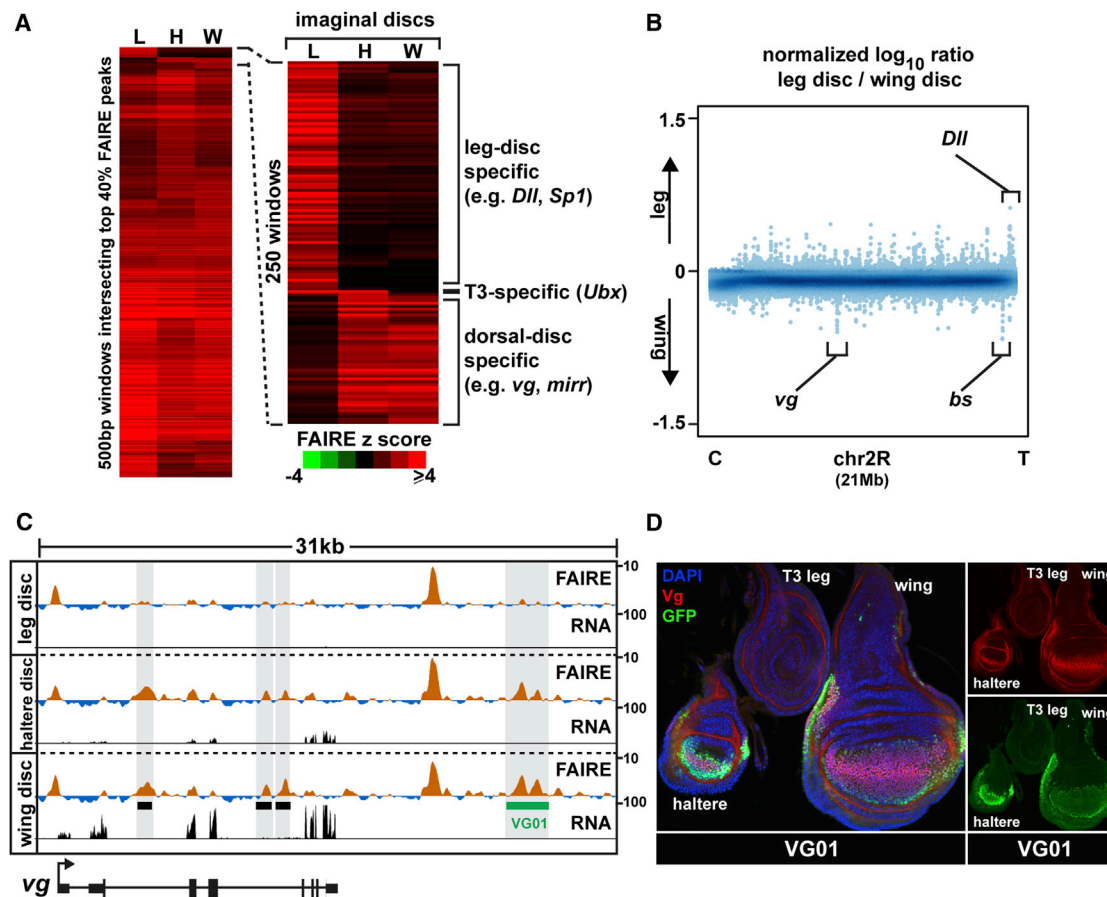
#### Differences in Appendage Open Chromatin Profiles Are Found at Loci Encoding Key Developmental Regulators

Given their diverse morphologies and transcription factor expression profiles (Figure S5), we were surprised to find that

wing and leg imaginal discs also share very similar open chromatin profiles. Of the most pronounced open chromatin regions (the top 20%, 3,525 peaks), only 110 were differentially open (Figure S2; Table S2). We speculated that these few differences in open chromatin between wing and leg imaginal discs were important in determining morphological differences, as was the case with wing and haltere imaginal discs. Indeed, genes with open chromatin specific to the leg imaginal discs include *Dll* and *Sp1*, the master regulators of leg development (Estella and Mann, 2010; Gorfinkel et al., 1997) (Figures 4A and 4B). Similarly, genes with open regions specific to the dorsal imaginal discs (wing and haltere) include *vg* and *blistered*, transcription factors required for development of these appendages (Kim et al., 1996; Montagne et al., 1996) (Figures 4 and S5). We tested whether these disc-specific open chromatin regions identified by FAIRE function as appendage-specific enhancers and found that 6 of 7 accurately recapitulate gene expression in imaginal discs of late third-instar larvae (Table S1; Document S2). Similar to our observations from the embryonic time course, the presence of disc-specific open chromatin correlated with disc-specific enhancer activity—the cloned imaginal disc enhancers are active only in the imaginal discs in which they are accessible. For example, the VG01 enhancer identified by this study, which is open specifically in wing and haltere imaginal discs, recapitulates *vg* expression specifically in wing and haltere imaginal discs and is not active in leg imaginal discs (Figure 4D). Together, these data demonstrate that genomic regions accessible for use in thoracic appendage imaginal discs are nearly identical, except at appendage master regulator gene loci.

#### Leg, Haltere, and Wing Open Chromatin Profiles Change Coordinately Over Developmental Time

Although the fate of each disc is already determined by late third-instar stages (Ashburner and Novitski, 1976), we thought that perhaps the similarity in thoracic imaginal disc open chromatin profiles might somehow be specific to this early stage of appendage formation. We therefore tested whether the terminally differentiated appendages that arose from these imaginal discs also share a similar open chromatin profile. We performed FAIRE on the fully developed appendages of stage 13 and stage 14 pharate adults (~210 hr). Like our observations in imaginal discs, the open chromatin profiles of the terminally differentiated appendages were strikingly similar to each other (Table S3). Spearman's rank correlation coefficients between the pharate appendages ranged from 0.67 to 0.80 (Figure 3A). Despite their similarity to each other, the open chromatin profiles in pharate appendages were markedly different from the open chromatin profiles in imaginal discs (Figures 5A and S6). These data lead to the unexpected conclusion that open chromatin profiles of different appendages at the same developmental stage are more similar to each other than they are to their own lineage in subsequent stages (Figure 5B). Thus, an imaginal wing disc is more similar to an imaginal leg disc than it is to its cellular progeny, the adult wing. This conclusion holds true regardless of whether FAIRE-seq or RNA-seq data are used in the analysis (Figure 5B) or whether the data are pooled or analyzed as individual replicates (Figures S7A and S7B). Although larval discs also give rise to body wall regions that are not present in pharate adult appendages, the many new open chromatin regions in the adult



**Figure 4. Appendage Open Chromatin Profiles Differ Primarily at Loci of Key Developmental Regulators**

(A) Hierarchical clustering of FAIRE signal from windows intersecting the top 7,000 imaginal disc peaks. Right, zoom-in of the most variable windows.

(B) Log<sub>10</sub> ratio (leg/wing) of FAIRE signal from chromosome 2R (21 Mb). Loci encoding key transcription factors are indicated.

(C) Browser representation of the *vg* locus showing FAIRE (Z score: -2 to 10) and RNA (FPKM: 0 to 100) signals in imaginal discs. Black boxes designate the locations of known enhancers: (left to right) boundary, *vgAME*, and quadrant enhancers (Kim et al., 1996; Stergachis et al., 2013; Williams et al., 1994). The green box designates the newly cloned VG01 enhancer, which is active in the wing and haltere, but not the leg.

(D) Confocal images of imaginal discs from the VG01 transgenic line, stained with DAPI (blue) and antibodies for GFP (green) and Vg (red). The VG01 enhancer recapitulates *vg* expression in haltere and wing imaginal discs and lack of expression in the leg disc.

See also Figure S5 and Table S2.

appendages support a large-scale change in open chromatin profiles over time.

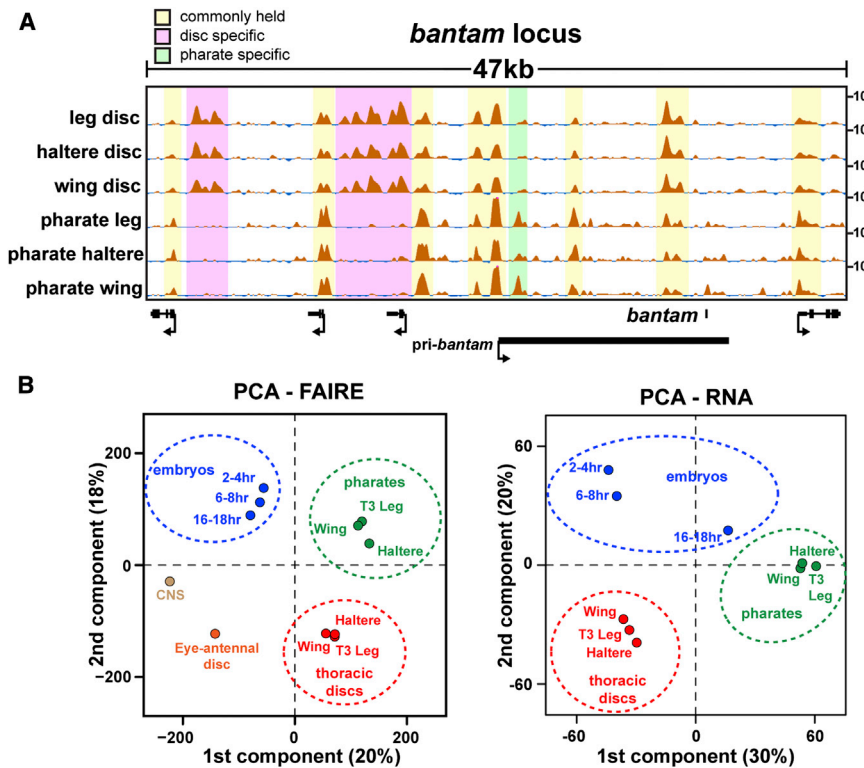
#### Different Cell Types Have Distinct Chromatin Profiles, but Morphologically Distinct Tissues Composed of Similar Cell Types Share Open Chromatin Profiles at a Given Stage of Development

Much like vertebrate limbs, the different *Drosophila* appendages are comprised of similar combinations of cell types (Klebes et al., 2002; Rodgers and Shearn, 1977; Taher et al., 2011). To test whether the similarities in thoracic imaginal disc open chromatin profiles also apply to body parts comprised of different combinations of cell types, we performed FAIRE on third-instar eye-antennal imaginal discs, which share developmental features of both dorsal and ventral appendages. The antenna is considered to be a ventral structure like the leg because mutations exist that transform antennal identity into leg (e.g., *homothorax*, *antennapedia*) (Casares and Mann, 1998). In contrast, the eye

is considered to be a dorsal structure like the wing because mutations exist that transform eye tissue into wing (e.g., *ophthalmoptera*) (Morata and Lawrence, 1979). Therefore, because the wing and leg have very similar open chromatin profiles, one might expect the eye-antennal disc to have an open chromatin profile very similar to the wing and leg.

The open chromatin profile of the eye-antennal disc is indeed very similar to those of the thoracic imaginal discs (Figures 3A, 6A, and 6C). For example, many open chromatin regions are held in common between the eye-antennal disc and the thoracic imaginal discs at the *Delta* (*Dl*) locus (Figure 6B). These similarities in open chromatin occur despite differences in *Dl* expression in these tissues. For example, *Dl* is transcribed in photoreceptors and cells within the morphogenetic furrow of the eye (Parks et al., 1995), whereas it is expressed in rings near the presumptive joints of leg imaginal discs (Bishop et al., 1999), and in stripes near the presumptive veins of wing imaginal discs (de Celis et al., 1997). Although there are many similarities





**Figure 5. Different Appendages Are More Similar to Each Other at a Given Time Point Than They Are to Their Own Cellular Progeny at a Later Time Point**

(A) FAIRE signal (Z score: -2 to 10) surrounding the *bantam* locus from imaginal discs and pharate appendages.

(B) Plots of PCA scores for the first two components from principal component analysis (PCA) of FAIRE and RNA signals. The percentage of the total variance represented by each component is shown in parentheses.

See also Figure S6 and Table S2.

in the open chromatin profiles between these imaginal discs, the eye-antennal disc open chromatin profile also deviates from the thoracic disc open chromatin profiles at many locations in the genome (Figures 6A and 6B). Many of these differences are found at genes that function in neural cells, particularly those regions that are open in the eye-antennal disc but are closed in the thoracic discs (Figure 6C). This is consistent with the known presence of neural cells in the eye half of the disc. To test this hypothesis, we compared the open chromatin profiles of the eye-antennal disc and the thoracic discs to those of the central nervous system of the same larval stage (late third-instar central nervous system [CNS]). These data demonstrate that the open chromatin profile from the eye-antennal disc can be reconstructed nearly completely from the profiles of the thoracic discs plus the CNS (Figures 6A and 6B). Thus, not all cells at a given developmental stage share the same open chromatin profiles. Instead, open chromatin profiles are likely shared by cells with similar identities. We have not yet explored the spatial heterogeneity of the open chromatin profiles within a given body part.

#### Appendage Master Regulator Transcription Factors Differentially Interpret the Same Enhancers

If the same set of enhancers is accessible between the developing appendages, how do master regulators, such as *Ubx*, produce differential gene expression? The *knot* (*kn*) gene is a known *Ubx* target that encodes a transcription factor required for cell fates between L3 and L4 wing veins (Vervoort et al., 1999). In wing imaginal discs, *kn* is expressed at high levels in a wide stripe of cells near the anterior-posterior boundary of the wing pouch and at lower levels in the wing hinge (Vervoort et al., 1999) (Figure 7A). In the haltere disc, *kn* is also expressed at

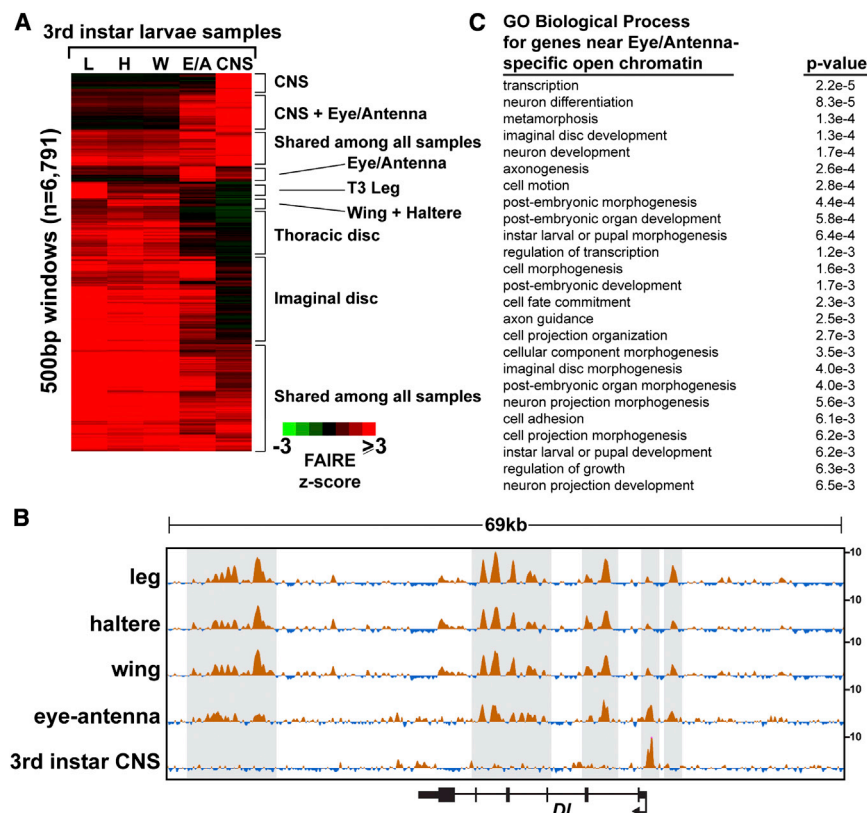
low levels in the presumptive hinge region (Figure 7B), but because of repression by *Ubx*, *kn* is not expressed in the pouch (Hersh and Carroll, 2005). Despite this difference in expression, the wing and haltere open chromatin profiles at the *kn* locus are identical (Figure 7A). For example, a previously characterized enhancer that recapitulates *kn* expression specifically in the wing pouch (Hersh and Carroll, 2005) is open in both wing and haltere discs (Figure 7A, *kn*<sup>wing</sup>). We cloned a separate open chromatin region from the fourth *kn* intron that is highly

accessible in both wing and haltere discs (KN01). Remarkably, the KN01 enhancer has strikingly different patterns of activity in the wing and haltere (Figure 7B). In the wing, the KN01 enhancer is active in the pouch and hinge, whereas in the haltere, it is active only in the hinge.

A similarly noteworthy result was obtained with an enhancer we identified in this study from the *Dll* gene that is highly open in both wing and haltere discs (Figure 7C, DLL04). Although *Dll* specifies leg identity, it is also required for development of cells near the margin of the wing, where *Dll* is expressed in late third-instar larvae (Gorfinkel et al., 1997) (Figure 7D). In the haltere, *Ubx* represses *Dll* expression in the center of the disc (Figure S7C), such that *Dll* is expressed only at the extreme anterior aspect of the pouch (Figure 7D); in contrast, *Ubx* does not repress *Dll* in the T3 leg disc despite *Ubx* expression because *Dll* is controlled by a different set of regulatory elements in leg discs (Estella et al., 2008; McKay et al., 2009) (Figures S7C–S7E; Document S2). Similar to our findings from the *kn* gene, the activity of the DLL04 enhancer in halteres is markedly different from its activity in wings, despite equivalent open chromatin profiles in both tissues (Figure 7D). Importantly, ChIP data show that both KN01 and DLL04 are specifically bound by *Ubx* in vivo (Choo et al., 2011; Slattery et al., 2011a). These results provide functional evidence that *Ubx* controls haltere morphogenesis by modulating the activity of the set of enhancers utilized in the wing, rather than by creating a haltere-specific set of enhancers.

#### DISCUSSION

We address a long-standing question in developmental biology: how does a single genome give rise to a diversity of structures?



**Figure 6. Eye-Antennal Open Chromatin Profiles Share Features with Appendage and CNS Open Chromatin Profiles**

(A) Hierarchical clustering of FAIRE signal in windows intersecting the union set of top 5K FAIRE peaks from third-instar larval samples. The eye-antennal signal can be reconstructed nearly completely from the profiles of the thoracic discs plus the CNS.

(B) FAIRE signal (Z score: -2 to 10) at the *Delta* (*DI*) locus, a gene with known roles in third-instar imaginal discs and CNS (see text). Note the eye-antennal signal shares features with both the thoracic discs and the CNS.

(C) Gene ontology terms of the genes nearest to peaks that are present in eye-antennal discs but are not present in the thoracic imaginal discs. Genes with neural cell functions are enriched. The Bonferroni corrected p value is shown.

tory elements that are in use among the cells of an imaginal disc. Our study does not rule out the existence of DNA regulatory elements that are not marked by open chromatin or are otherwise not detected by FAIRE.

Despite this sensitivity, our approach does not identify which cells within the tissue have a particular open chromatin

profile. For a given locus, it is possible that all cells in the tissue share a single open chromatin profile or that the FAIRE signal originates from only a subset of cells in which a given enhancer is active. Our comparisons between eye-antennal discs, larval CNS, and thoracic discs (Figures 3A and 6) suggest that the latter scenario is most likely, with open chromatin profiles among cells within a tissue shared by cells with similar identities at a given developmental stage.

Our results indicate that the combination of transcription factors expressed in each thoracic appendage acts upon a shared set of enhancers to create different morphological outputs, rather than operating on a set of enhancers that is specific to each tissue (Figure 7E). This conclusion is based upon the surprising observation that the open chromatin profiles of the developing appendages are nearly identical at a given developmental stage. Therefore, rather than each master regulator operating on a set of enhancers that is specific to each tissue, the master regulators instead have access to the same set of enhancers in different tissues, which they differentially regulate. We also find that tissues composed of similar combinations of cell types have very similar open chromatin profiles, suggesting that a limited number of distinct open chromatin profiles may exist at a given stage of development, dependent on cell-type identity.

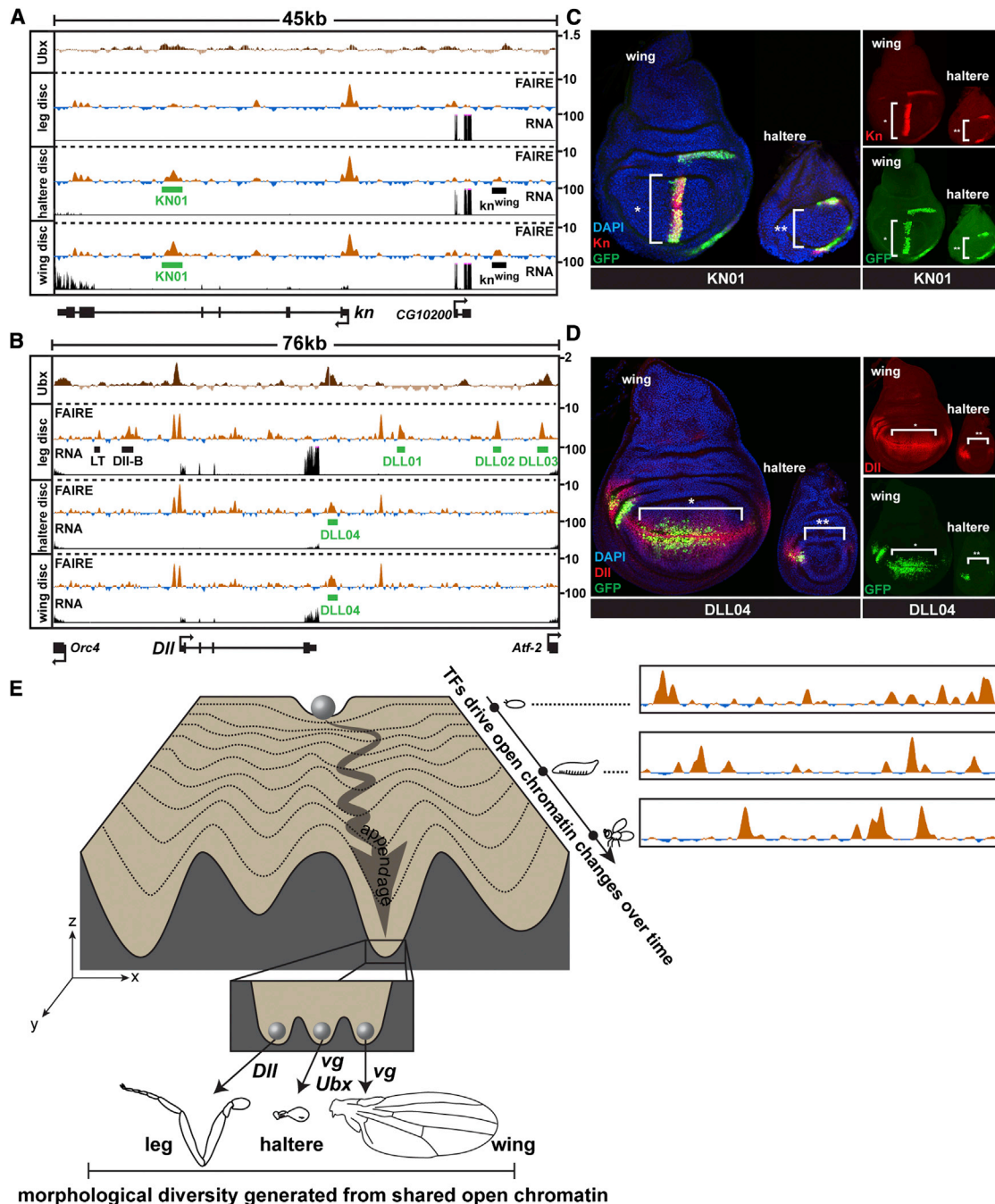
### Considerations Regarding the Sensitivity of FAIRE and the Spatial Heterogeneity of Open Chromatin Profiles within a Given Body Part

We dissected different tissues from developing flies to compare their open chromatin profiles. These tissues are composed of different cell types, each with its own gene expression profile. Our FAIRE data thus represent the average signal across all cells present in a sample. However, data from embryos and imaginal discs indicate that FAIRE is a very sensitive detector of functional DNA regulatory elements. For example, the *Dll01* enhancer is active in 2–4 neurons of the leg imaginal disc; yet, the FAIRE signal at *Dll01* is as strong as the *Dll04* enhancer, which is active in hundreds of cells of the wing pouch (Figures 7B and 7D; Document S2). Thus, FAIRE may detect nearly all of the DNA regula-

### Differential Regulation of a Shared Set of Enhancers as a Mechanism of Generating Morphological Diversity

Our observation that halteres and wings share open chromatin profiles demonstrates that Hox proteins like Ubx can differentially interpret the DNA sequence within the same subset of enhancers to modify one structure into another. This is consistent with the idea that morphological differences are largely dependent on the precise location, duration, and magnitude of expression of similar genes (Crickmore and Mann, 2006; Weatherbee et al., 1998), and it is further supported by the similarity in gene expression profiles observed between *Drosophila* appendages (Klebes et al., 2002) (Figure S4) and observed between vertebrate limbs (Taher et al., 2011). However, that such dramatic differences in morphology could be achieved by using the same subset of DNA regulatory modules in different tissues genome-wide was not known. Our findings provide a molecular framework to support the hypothesis that Hox factors function as “versatile generalists,” rather than stable binary switches (Akam, 1998). The similarity in open chromatin profiles between wings and legs suggests that this framework also extends to other classes of master regulators beyond the Hox genes. We





**Figure 7. Transcription Factors Differentially Regulate the Activity of the Same Enhancers in Different Appendages**

(A and B) FAIRE (Z score), RNA (CPM), and Ubx ChIP ( $\log_2$  ratio) (Choo et al., 2011; Slattery et al., 2011a) signal at the *knot* (*kn*) (A) and *Distalless* (*Dll*) (B) loci in imaginal discs, with locations of enhancers KN01 and DLL01-04 (green boxes) identified in this study, plotted as in Figure 3C.

(C and D) Confocal images showing reporter activity of KN01 (C) and DLL04 (D) in wing and haltere imaginal discs. Discs were stained for DAPI (blue) and antibodies to GFP (green) and Kn (C) or Dll (D) (red).

(E) A conceptual model of the appendage shared open chromatin profiles, depicted within the framework of Waddington's epigenetic landscape (Waddington, 1957). A range of open chromatin profiles exists within the fly (x axis) at any single stage of development. These profiles are dynamic over time (y axis) and differ by varying degrees (z axis) between tissues. Therefore, each valley along the y axis may be considered to represent the shared open chromatin profile of a developing anatomical structure or tissue (e.g., appendage) over time, while each dotted line along the x axis represents the chromatin states in the fly at a given point in time, as illustrated by the cartoon to the right of the landscape. The inset depicts the specific group of selector genes expressed in each developing appendage, acting upon the same set of open chromatin regions to create morphologically diverse tissues.

See also Figure S7.

also note that, like the *Drosophila* appendages, vertebrate limbs are composed of similar combinations of cell types that differ in their pattern of organization. Moreover, the *Drosophila* appendage master regulators share a common evolutionary origin with the master regulators of vertebrate limb development (Mann and Carroll, 2002), suggesting that the concept of shared open chromatin profiles may also apply to human development.

Our data suggest that open chromatin profiles vary both over time for a given lineage and between cell types at a given stage of development. Given the dramatic differences in the FAIRE landscape observed during embryogenesis and between the CNS and the appendage imaginal discs during larval stages, it appears as though the alteration of the chromatin landscape is especially important for specifying different cell types from a single genome. After cell-type specification, open chromatin profiles in the appendages continued to change as they proceeded toward terminal differentiation, suggesting that stage-specific functions require significant opening of new sites or the closing of existing sites. These findings contrast with those investigating hormone-induced changes in chromatin accessibility (John et al., 2011), in which the majority of open chromatin sites did not change after hormone treatment, including sites of de novo hormone-receptor binding. Thus, it may be that genome-wide remodeling of chromatin accessibility is reserved for the longer timescales and eventual permanence of developmental processes rather than the shorter timescales and transience of environmental responses.

### What Determines the Appendage Open Chromatin Profiles?

Different combinations of “master regulator” transcription factors, often termed selector genes, are expressed in the developing appendages. Selectors are thought to specify the identity of distinct regions of developing animals by regulating the expression of transcription factors, signaling pathway components, and other genes that act as effectors of identity (Mann and Carroll, 2002). One property attributed to selectors to explain their unique power to specify identity during development is the ability to act as pioneer transcription factors (Budry et al., 2012; Fakhouri et al., 2010). In such models, selectors are the first factors to bind target genes; once bound, selectors then create a permissive chromatin environment for other transcription factors to bind. Our finding that the same set of enhancers are accessible for use in all three appendages, with the exception of the enhancers that control expression of the selector genes themselves and other primary determinants of appendage identity, suggests that the selectors expressed in each appendage do not absolutely control the chromatin accessibility profile; otherwise, the haltere chromatin profile (for example) would differ from that of the wing because of the expression of Ubx.

What then determines the appendage open chromatin profiles? Because open chromatin is likely a consequence of transcription factor binding, two nonexclusive models are possible. First, different combinations of transcription factors could specify the same open chromatin profiles. In this scenario, each appendage’s selectors would bind to the same enhancers across the genome. For example, the wing selector Vg, with its DNA binding partner Sd, would bind the same enhancers in the wing as Dll and Sp1 bind in the leg. In the second model, tran-

scription factors other than the selectors could specify the appendage open chromatin profiles. Selector genes are a small fraction of the total number of transcription factors expressed in the appendages (Figure S5). Many of the nonselector transcription factors are expressed at similar levels in each appendage, and thermodynamic models would predict them to bind the same enhancers (Biggin, 2011). This model could also help to explain how the appendage open chromatin profiles coordinately change over developmental time despite the steady expression of the appendage selector genes during this same period. It is possible that stage-specific transcription factors determine which enhancers are accessible at a given stage of development. This would help to explain the temporal specificity of target genes observed for selectors such as Ubx (Pavlopoulos and Akam, 2011). Recent work supports the role of hormone-dependent transcription factors in specifying the temporal identity of target genes in the developing appendages (Mou et al., 2012). Further experiments, including ChIP of the selectors from each of the appendages, will be required to determine the extent to which either of these models is correct.

### What Determines the Differential Activity of Enhancers in Different Appendages?

We show that binding of Ubx results in differential activity of enhancers in the haltere imaginal disc relative to the wing, despite equivalent accessibility of the enhancers in both discs, indicating that master regulators control morphogenesis by differentially regulating the activity of the same set of enhancers. It is likely that functional specificity of enhancers is achieved through multiple mechanisms. These include differential recruitment of coactivators and corepressors, modulation of binding specificity through interactions with cofactors (Slattery et al., 2011b), differential utilization of binding sites within a single enhancer (Bradley et al., 2010), or regulation of binding dynamics through an altered chromatin context (Lickwar et al., 2012). This last mechanism would allow for epigenetic modifications early in development to affect subsequent gene regulatory events. For example, the activity of Ubx enhancers in the early embryo (Figure 3C) may control recruitment of Trithorax or Polycomb complexes to the PREs within the Ubx locus, which then maintain Ubx in the ON or OFF state at subsequent stages of development (Papp and Müller, 2006; Pirrotta et al., 1995). Consistent with this model, Ubx enhancers active in the early embryo are only accessible in our 2–4 hr time point, whereas the accessibility of Ubx PREs varies little across developmental time or between tissues at a given developmental stage.

### Evolutionary Significance

Our results also have implications for the evolution of morphological diversity. Halteres and wings are considered to have a common evolutionary origin, but the relationship between insect wings and legs is unresolved (Averof and Cohen, 1997; Jockusch and Ober, 2004). Our observation that wings and legs share open chromatin profiles supports the hypothesis that wings and legs also share a common evolutionary origin in flies. Because legs appear in the fossil record before wings, the similarity in their open chromatin profiles suggests that the existing leg *cis*-regulatory network was co-opted for use in creation of dorsal appendages during insect evolution.

## EXPERIMENTAL PROCEDURES

## RNA and FAIRE Sample Collections

*Drosophila* strains were grown and collected as previously reported (Agelopoulos et al., 2012; Estella et al., 2008). RNA-seq and FAIRE-seq experiments were performed essentially as described previously (Simon et al., 2012). See the Supplemental Experimental Procedures for further details.

## Sequence Data Analysis

FAIRE-seq data were processed essentially as previously described (Simon et al., 2012). FAIRE signal was converted to Z scores: genomic DNA signal (normalized to read depth) was subtracted from FAIRE signal (normalized to read depth) at each base, and Z scores were generated at each base by calculating the mean and standard deviation of the FAIRE base coverage signal for individual chromosome arms, subtracting the mean signal from the signal at each base on the given chromosome arm, and dividing by the standard deviation. FAIRE and DNaseI peaks were called with MACS2 (Zhang et al., 2008). Hierarchical clustering and principal component analysis was performed with Cluster 3.0 (de Hoon et al., 2004). RNA-seq data were aligned to the reference genome (dm3) using TopHat (version 1.1.4) and assembled into transcripts with Cufflinks (Trapnell et al., 2009) (version 0.9.3). Differential gene expression calls were made with Cuffdiff (version 0.9.3), as outlined in Figure S4. The UCSC Genome Browser was used to visualize data (Kent et al., 2002) (<http://genome.ucsc.edu>). See the Supplemental Experimental Procedures for further details. Data have been deposited in the Gene Expression Omnibus under the accession number GSE38727. Included in the data set are raw sequencing reads, processed FAIRE signal tracks, FAIRE peaks calls, and RNA-seq fragments per kilobase of exon per million fragments mapped (FPKM) values.

## Defining Regions of Differential Open Chromatin in Appendages

For the analysis shown in Figures S2 and S5 and Tables S2 and S3, we focused on the most pronounced open chromatin regions because we hypothesized that these would be more likely to be associated with regulatory activity. We reasoned that DNA regulatory modules that are most likely to have mutually exclusive activity between appendages would exhibit large-scale differences in the degree to which they are open. Therefore, we defined a peak as differentially open if it was within the top 20% of FAIRE peaks (ranked by their MACS q-values) from the first sample and did not intersect with a peak in the top 60% from the second sample. The number of FAIRE peaks in each of the two data sets being compared was kept equal for each comparison. See Figure S2 for details.

For details on data processing, enhancer cloning, and immunofluorescence experiments, see the Supplemental Experimental Procedures.

## ACCESSION NUMBERS

The GEO accession number for all sequencing data reported in this paper is GSE38727.

## SUPPLEMENTAL INFORMATION

Supplemental Information includes Supplemental Experimental Procedures, seven figures, three tables, and one data file and can be found with this article online at <http://dx.doi.org/10.1016/j.devcel.2013.10.009>.

## AUTHOR CONTRIBUTIONS

D.J.M. and J.D.L. designed the study. D.J.M. performed the experiments. D.J.M. and J.D.L. performed data analysis and wrote the paper.

## ACKNOWLEDGMENTS

We thank J. Pearson, C. Doe, R. Mann, M. Croatzier, G. Struhl, and A. Laughon for sharing reagents, P. Giresi, J. Simon, and S. Pott for technical assistance, and B. Duronio, M. Peifer, G. Matera, and V. Bautsch for providing the infrastructure for *Drosophila* work and for commenting on the manuscript. This work was supported in part by a grant from the National Institutes of Health (F32GM090759).

Received: June 19, 2013

Revised: September 19, 2013

Accepted: October 13, 2013

Published: November 11, 2013

## REFERENCES

- Aerts, S., van Helden, J., Sand, O., and Hassan, B.A. (2007). Fine-tuning enhancer models to predict transcriptional targets across multiple genomes. *PLoS ONE* 2, e1115.
- Agelopoulos, M., McKay, D.J., and Mann, R.S. (2012). Developmental regulation of chromatin conformation by Hox proteins in *Drosophila*. *Cell Rep.* 1, 350–359.
- Akam, M. (1998). Hox genes: from master genes to micromanagers. *Curr. Biol.* 8, R676–R678.
- Arnold, C.D., Gerlach, D., Stelzer, C., Boryń, L.M., Rath, M., and Stark, A. (2013). Genome-wide quantitative enhancer activity maps identified by STARR-seq. *Science* 339, 1074–1077.
- Ashburner, M., and Novitski, E. (1976). *The Genetics and Biology of Drosophila*. (London: Academic Press).
- Averof, M., and Cohen, S.M. (1997). Evolutionary origin of insect wings from ancestral gills. *Nature* 385, 627–630.
- Bartkuhn, M., Straub, T., Herold, M., Herrmann, M., Rathke, C., Saumweber, H., Gilfillan, G.D., Becker, P.B., and Renkawitz, R. (2009). Active promoters and insulators are marked by the centrosomal protein 190. *EMBO J.* 28, 877–888.
- Berman, B.P., Nibu, Y., Pfeiffer, B.D., Tomancak, P., Celniker, S.E., Levine, M., Rubin, G.M., and Eisen, M.B. (2002). Exploiting transcription factor binding site clustering to identify cis-regulatory modules involved in pattern formation in the *Drosophila* genome. *Proc. Natl. Acad. Sci. USA* 99, 757–762.
- Biggin, M.D. (2011). Animal transcription networks as highly connected, quantitative continua. *Dev. Cell* 21, 611–626.
- Bishop, S.A., Klein, T., Arias, A.M., and Couso, J.P. (1999). Composite signaling from Serrate and Delta establishes leg segments in *Drosophila* through Notch. *Development* 126, 2993–3003.
- Bradley, R.K., Li, X.Y., Trapnell, C., Davidson, S., Pachter, L., Chu, H.C., Tonkin, L.A., Biggin, M.D., and Eisen, M.B. (2010). Binding site turnover produces pervasive quantitative changes in transcription factor binding between closely related *Drosophila* species. *PLoS Biol.* 8, e1000343.
- Budry, L., Balsalobre, A., Gauthier, Y., Khetchoumian, K., L'honoré, A., Vallette, S., Brue, T., Figarella-Branger, D., Meij, B., and Drouin, J. (2012). The selector gene Pax7 dictates alternate pituitary cell fates through its pioneer action on chromatin remodeling. *Genes Dev.* 26, 2299–2310.
- Carroll, S.B. (2008). Evo-devo and an expanding evolutionary synthesis: a genetic theory of morphological evolution. *Cell* 134, 25–36.
- Casares, F., and Mann, R.S. (1998). Control of antennal versus leg development in *Drosophila*. *Nature* 392, 723–726.
- Chan, C.S., Rastelli, L., and Pirrotta, V. (1994). A Polycomb response element in the Ubx gene that determines an epigenetically inherited state of repression. *EMBO J.* 13, 2553–2564.
- Choo, S.W., White, R., and Russell, S. (2011). Genome-wide analysis of the binding of the Hox protein Ultrabithorax and the Hox cofactor Homothorax in *Drosophila*. *PLoS ONE* 6, e14778.
- Crickmore, M.A., and Mann, R.S. (2006). Hox control of organ size by regulation of morphogen production and mobility. *Science* 313, 63–68.
- Crickmore, M.A., and Mann, R.S. (2008). The control of size in animals: insights from selector genes. *Bioessays* 30, 843–853.
- de Celis, J.F., Bray, S., and Garcia-Bellido, A. (1997). Notch signalling regulates veinlet expression and establishes boundaries between veins and interveins in the *Drosophila* wing. *Development* 124, 1919–1928.
- de Hoon, M.J., Imoto, S., Nolan, J., and Miyano, S. (2004). Open source clustering software. *Bioinformatics* 20, 1453–1454.
- Dorschner, M.O., Hawrylycz, M., Humbert, R., Wallace, J.C., Shafer, A., Kawamoto, J., Mack, J., Hall, R., Goldy, J., Sabo, P.J., et al. (2004).



High-throughput localization of functional elements by quantitative chromatin profiling. *Nat. Methods* 1, 219–225.

Engel, M.S., and Grimaldi, D.A. (2004). New light shed on the oldest insect. *Nature* 427, 627–630.

Estella, C., and Mann, R.S. (2010). Non-redundant selector and growth-promoting functions of two sister genes, buttonhead and Sp1, in *Drosophila* leg development. *PLoS Genet.* 6, e1001001.

Estella, C., McKay, D.J., and Mann, R.S. (2008). Molecular integration of wingless, decapentaplegic, and autoregulatory inputs into Distalless during *Drosophila* leg development. *Dev. Cell* 14, 86–96.

Fakhouri, T.H., Stevenson, J., Chisholm, A.D., and Mango, S.E. (2010). Dynamic chromatin organization during foregut development mediated by the organ selector gene PHA-4/FoxA. *PLoS Genet.* 6, pii: e1001060.

Fisher, W.W., Li, J.J., Hammonds, A.S., Brown, J.B., Pfeiffer, B.D., Weiszmann, R., MacArthur, S., Thomas, S., Stamatoyannopoulos, J.A., Eisen, M.B., et al. (2012). DNA regions bound at low occupancy by transcription factors do not drive patterned reporter gene expression in *Drosophila*. *Proc. Natl. Acad. Sci. USA* 109, 21330–21335.

Gallo, S.M., Gerrard, D.T., Miner, D., Simich, M., Des Soye, B., Bergman, C.M., and Halfon, M.S. (2011). REDfly v3.0: toward a comprehensive database of transcriptional regulatory elements in *Drosophila*. *Nucleic Acids Res.* 39 (Database issue), D118–D123.

Garrouste, R., Clément, G., Nel, P., Engel, M.S., Grandcolas, P., D'Haese, C., Lagebro, L., Denayer, J., Gueriau, P., Lafaité, P., et al. (2012). A complete insect from the late Devonian period. *Nature* 488, 82–85.

Giresi, P.G., Kim, J., McDaniel, R.M., Iyer, V.R., and Lieb, J.D. (2007). FAIRE (formaldehyde-assisted isolation of regulatory elements) isolates active regulatory elements from human chromatin. *Genome Res.* 17, 877–885.

Gorinkiel, N., Morata, G., and Guerrero, I. (1997). The homeobox gene Distalless induces ventral appendage development in *Drosophila*. *Genes Dev.* 11, 2259–2271.

Grimaldi, D.A., and Engel, M.S. (2005). *Evolution of the Insects*. (Cambridge: Cambridge University Press).

Halder, G., Polaczyk, P., Kraus, M.E., Hudson, A., Kim, J., Laughon, A., and Carroll, S. (1998). The Vestigial and Scalloped proteins act together to directly regulate wing-specific gene expression in *Drosophila*. *Genes Dev.* 12, 3900–3909.

Hersh, B.M., and Carroll, S.B. (2005). Direct regulation of knot gene expression by Ultrabithorax and the evolution of cis-regulatory elements in *Drosophila*. *Development* 132, 1567–1577.

Hersh, B.M., Nelson, C.E., Stoll, S.J., Norton, J.E., Albert, T.J., and Carroll, S.B. (2007). The UBX-regulated network in the haltere imaginal disc of *D. melanogaster*. *Dev. Biol.* 302, 717–727.

Hirono, K., Margolis, J.S., Posakony, J.W., and Doe, C.Q. (2012). Identification of hunchback cis-regulatory DNA conferring temporal expression in neuroblasts and neurons. *Gene Expr. Patterns* 12, 11–17.

Jockusch, E.L., and Ober, K.A. (2004). Hypothesis testing in evolutionary developmental biology: a case study from insect wings. *J. Hered.* 95, 382–396.

John, S., Sabo, P.J., Thurman, R.E., Sung, M.H., Biddie, S.C., Johnson, T.A., Hager, G.L., and Stamatoyannopoulos, J.A. (2011). Chromatin accessibility pre-determines glucocorticoid receptor binding patterns. *Nat. Genet.* 43, 264–268.

Jory, A., Estella, C., Giorgianni, M.W., Slattery, M., Lavery, T.R., Rubin, G.M., and Mann, R.S. (2012). A survey of 6,300 genomic fragments for cis-regulatory activity in the imaginal discs of *Drosophila melanogaster*. *Cell Rep.* 2, 1014–1024.

Kaplan, N., Moore, I.K., Fondufe-Mittendorf, Y., Gossett, A.J., Tillo, D., Field, Y., LeProust, E.M., Hughes, T.R., Lieb, J.D., Widom, J., and Segal, E. (2009). The DNA-encoded nucleosome organization of a eukaryotic genome. *Nature* 458, 362–366.

Kent, W.J., Sugnet, C.W., Furey, T.S., Roskin, K.M., Pringle, T.H., Zahler, A.M., and Haussler, D. (2002). The human genome browser at UCSC. *Genome Res.* 12, 996–1006.

Kim, J., Sebring, A., Esch, J.J., Kraus, M.E., Vorwerk, K., Magee, J., and Carroll, S.B. (1996). Integration of positional signals and regulation of wing formation and identity by *Drosophila* vestigial gene. *Nature* 382, 133–138.

Klebes, A., Biehs, B., Cifuentes, F., and Kornberg, T.B. (2002). Expression profiling of *Drosophila* imaginal discs. *Genome Biol.* 3, RESEARCH0038.

Lewis, E.B. (1978). A gene complex controlling segmentation in *Drosophila*. *Nature* 276, 565–570.

Lickwar, C.R., Mueller, F., Hanlon, S.E., McNally, J.G., and Lieb, J.D. (2012). Genome-wide protein-DNA binding dynamics suggest a molecular clutch for transcription factor function. *Nature* 484, 251–255.

MacAlpine, H.K., Gordân, R., Powell, S.K., Hartemink, A.J., and MacAlpine, D.M. (2010). *Drosophila* ORC localizes to open chromatin and marks sites of cohesin complex loading. *Genome Res.* 20, 201–211.

Mann, R.S., and Carroll, S.B. (2002). Molecular mechanisms of selector gene function and evolution. *Curr. Opin. Genet. Dev.* 12, 592–600.

Margolis, J.S., Borowsky, M.L., Steingrímsson, E., Shim, C.W., Lengyel, J.A., and Posakony, J.W. (1995). Posterior stripe expression of hunchback is driven from two promoters by a common enhancer element. *Development* 121, 3067–3077.

Markstein, M., Markstein, P., Markstein, V., and Levine, M.S. (2002). Genome-wide analysis of clustered Dorsal binding sites identifies putative target genes in the *Drosophila* embryo. *Proc. Natl. Acad. Sci. USA* 99, 763–768.

McKay, D.J., Estella, C., and Mann, R.S. (2009). The origins of the *Drosophila* leg revealed by the cis-regulatory architecture of the Distalless gene. *Development* 136, 61–71.

Merabet, S., Ebner, A., and Affolter, M. (2005). The *Drosophila* Extradenticle and Homothorax selector proteins control branchless/FGF expression in mesodermal bridge-cells. *EMBO Rep.* 6, 762–768.

Montagne, J., Groppe, J., Guillemin, K., Krasnow, M.A., Gehring, W.J., and Affolter, M. (1996). The *Drosophila* Serum Response Factor gene is required for the formation of intervein tissue of the wing and is allelic to blistered. *Development* 122, 2589–2597.

Morata, G., and Lawrence, P.A. (1979). Development of the eye-antenna imaginal disc of *Drosophila*. *Dev. Biol.* 70, 355–371.

Mou, X., Duncan, D.M., Baehrecke, E.H., and Duncan, I. (2012). Control of target gene specificity during metamorphosis by the steroid response gene E93. *Proc. Natl. Acad. Sci. USA* 109, 2949–2954.

Müller, J., and Bienz, M. (1991). Long range repression conferring boundaries of Ultrabithorax expression in the *Drosophila* embryo. *EMBO J.* 10, 3147–3155.

Nagy, P.L., Cleary, M.L., Brown, P.O., and Lieb, J.D. (2003). Genomewide demarcation of RNA polymerase II transcription units revealed by physical fractionation of chromatin. *Proc. Natl. Acad. Sci. USA* 100, 6364–6369.

Nègre, N., Brown, C.D., Ma, L., Bristow, C.A., Miller, S.W., Wagner, U., Kheradpour, P., Eaton, M.L., Loriaux, P., Sealfon, R., et al. (2011). A cis-regulatory map of the *Drosophila* genome. *Nature* 471, 527–531.

Nüsslein-Volhard, C., and Wieschaus, E. (1980). Mutations affecting segment number and polarity in *Drosophila*. *Nature* 287, 795–801.

Papp, B., and Müller, J. (2006). Histone trimethylation and the maintenance of transcriptional ON and OFF states by trxG and PcG proteins. *Genes Dev.* 20, 2041–2054.

Parks, A.L., Turner, F.R., and Muskavitch, M.A. (1995). Relationships between complex Delta expression and the specification of retinal cell fates during *Drosophila* eye development. *Mech. Dev.* 50, 201–216.

Pavlopoulos, A., and Akam, M. (2011). Hox gene Ultrabithorax regulates distinct sets of target genes at successive stages of *Drosophila* haltere morphogenesis. *Proc. Natl. Acad. Sci. USA* 108, 2855–2860.

Perry, M.W., Boettiger, A.N., and Levine, M. (2011). Multiple enhancers ensure precision of gap gene-expression patterns in the *Drosophila* embryo. *Proc. Natl. Acad. Sci. USA* 108, 13570–13575.

Pfeiffer, B.D., Jenett, A., Hammonds, A.S., Ngo, T.T., Misra, S., Murphy, C., Scully, A., Carlson, J.W., Wan, K.H., Lavery, T.R., et al. (2008). Tools for

- neuroanatomy and neurogenetics in *Drosophila*. *Proc. Natl. Acad. Sci. USA* 105, 9715–9720.
- Pfeiffer, B.D., Ngo, T.T., Hibbard, K.L., Murphy, C., Jenett, A., Truman, J.W., and Rubin, G.M. (2010). Refinement of tools for targeted gene expression in *Drosophila*. *Genetics* 186, 735–755.
- Pirrotta, V., Chan, C.S., McCabe, D., and Qian, S. (1995). Distinct parasegmental and imaginal enhancers and the establishment of the expression pattern of the *Ubx* gene. *Genetics* 141, 1439–1450.
- Qian, S., Capovilla, M., and Pirrotta, V. (1991). The *bx* region enhancer, a distant cis-control element of the *Drosophila Ubx* gene and its regulation by hunchback and other segmentation genes. *EMBO J.* 10, 1415–1425.
- Rebeiz, M., Reeves, N.L., and Posakony, J.W. (2002). SCORE: a computational approach to the identification of cis-regulatory modules and target genes in whole-genome sequence data. Site clustering over random expectation. *Proc. Natl. Acad. Sci. USA* 99, 9888–9893.
- Rodgers, M.E., and Shearn, A. (1977). Patterns of protein synthesis in imaginal discs of *Drosophila melanogaster*. *Cell* 12, 915–921.
- Sandmann, T., Girardot, C., Brehme, M., Tongprasit, W., Stolz, V., and Furlong, E.E. (2007). A core transcriptional network for early mesoderm development in *Drosophila melanogaster*. *Genes Dev.* 21, 436–449.
- Siepel, A., Bejerano, G., Pedersen, J.S., Hinrichs, A.S., Hou, M., Rosenbloom, K., Clawson, H., Spieth, J., Hillier, L.W., Richards, S., et al. (2005). Evolutionarily conserved elements in vertebrate, insect, worm, and yeast genomes. *Genome Res.* 15, 1034–1050.
- Simon, J., Peifer, M., Bender, W., and O'Connor, M. (1990). Regulatory elements of the bithorax complex that control expression along the anterior-posterior axis. *EMBO J.* 9, 3945–3956.
- Simon, J.M., Giresi, P.G., Davis, I.J., and Lieb, J.D. (2012). Using formaldehyde-assisted isolation of regulatory elements (FAIRE) to isolate active regulatory DNA. *Nat. Protoc.* 7, 256–267.
- Slattery, M., Ma, L., Nègre, N., White, K.P., and Mann, R.S. (2011a). Genome-wide tissue-specific occupancy of the Hox protein Ultrabithorax and Hox cofactor Homothorax in *Drosophila*. *PLoS ONE* 6, e14686.
- Slattery, M., Riley, T., Liu, P., Abe, N., Gomez-Alcala, P., Dror, I., Zhou, T., Rohs, R., Honig, B., Bussemaker, H.J., and Mann, R.S. (2011b). Cofactor binding evokes latent differences in DNA binding specificity between Hox proteins. *Cell* 147, 1270–1282.
- Song, L., Zhang, Z., Gräfer, S., Huss, M., Keefe, D., et al. (2011). Open chromatin defined by DNaseI and FAIRE identifies regulatory elements that shape cell-type identity. *Genome Res.* 21, 1757–1767.
- Stergachis, A.B., Neph, S., Reynolds, A., Humbert, R., Miller, B., Paige, S.L., Vernot, B., Cheng, J.B., Thurman, R.E., Sandstrom, R., et al. (2013). Developmental fate and cellular maturity encoded in human regulatory DNA landscapes. *Cell* 154, 888–903.
- Taher, L., Collette, N.M., Murugesu, D., Maxwell, E., Ovcharenko, I., and Loots, G.G. (2011). Global gene expression analysis of murine limb development. *PLoS ONE* 6, e28358.
- Thomas, S., Li, X.Y., Sabo, P.J., Sandstrom, R., Thurman, R.E., Canfield, T.K., Giste, E., Fisher, W., Hammonds, A., Celniker, S.E., et al. (2011). Dynamic reprogramming of chromatin accessibility during *Drosophila* embryo development. *Genome Biol.* 12, R43.
- Trapnell, C., Pachter, L., and Salzberg, S.L. (2009). TopHat: discovering splice junctions with RNA-Seq. *Bioinformatics* 25, 1105–1111.
- van Steensel, B., and Henikoff, S. (2000). Identification of in vivo DNA targets of chromatin proteins using tethered dam methyltransferase. *Nat. Biotechnol.* 18, 424–428.
- Vervoort, M., Crozatier, M., Valle, D., and Vincent, A. (1999). The COE transcription factor Collier is a mediator of short-range Hedgehog-induced patterning of the *Drosophila* wing. *Curr. Biol.* 9, 632–639.
- Visel, A., Taher, L., Girgis, H., May, D., Golonzhka, O., Hoch, R.V., McKinsey, G.L., Pattabiraman, K., Silberberg, S.N., Blow, M.J., et al. (2013). A high-resolution enhancer atlas of the developing telencephalon. *Cell* 152, 895–908.
- Waddington, C.H. (1957). *The Strategy of the Genes: A Discussion of Some Aspects of Theoretical Biology*. (London: Allen & Unwin).
- Weatherbee, S.D., Halder, G., Kim, J., Hudson, A., and Carroll, S. (1998). Ultrabithorax regulates genes at several levels of the wing-patterning hierarchy to shape the development of the *Drosophila* haltere. *Genes Dev.* 12, 1474–1482.
- Williams, J.A., Paddock, S.W., Vorwerk, K., and Carroll, S.B. (1994). Organization of wing formation and induction of a wing-patterning gene at the dorsal/ventral compartment boundary. *Nature* 368, 299–305.
- Wray, G.A. (2007). The evolutionary significance of cis-regulatory mutations. *Nat. Rev. Genet.* 8, 206–216.
- Zhang, C.C., Müller, J., Hoch, M., Jäckle, H., and Bienz, M. (1991). Target sequences for hunchback in a control region conferring Ultrabithorax expression boundaries. *Development* 113, 1171–1179.
- Zhang, Y., Liu, T., Meyer, C.A., Eeckhoute, J., Johnson, D.S., Bernstein, B.E., Nussbaum, C., Myers, R.M., Brown, M., Li, W., and Liu, X.S. (2008). Model-based analysis of ChIP-seq (MACS). *Genome Biol.* 9, R137.
- Zinzen, R.P., Girardot, C., Gagneur, J., Braun, M., and Furlong, E.E. (2009). Combinatorial binding predicts spatio-temporal cis-regulatory activity. *Nature* 462, 65–70.